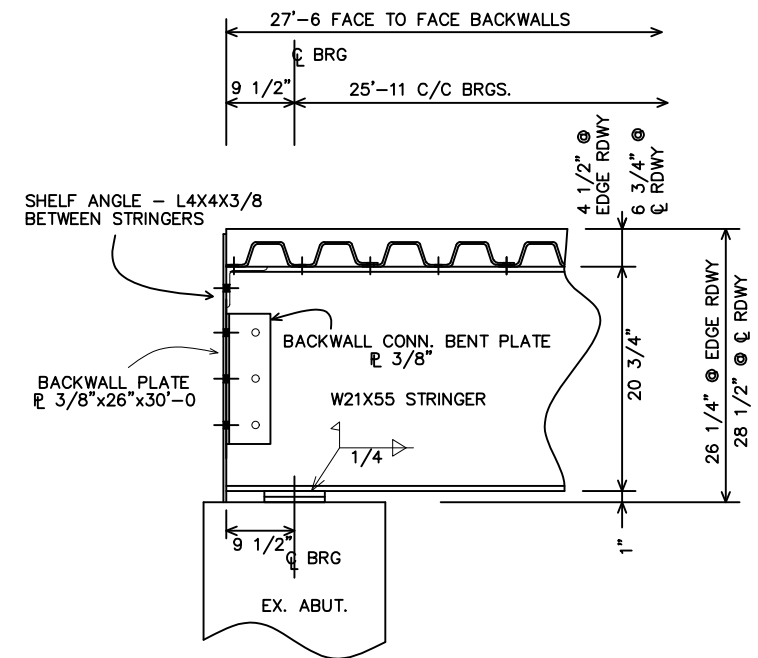
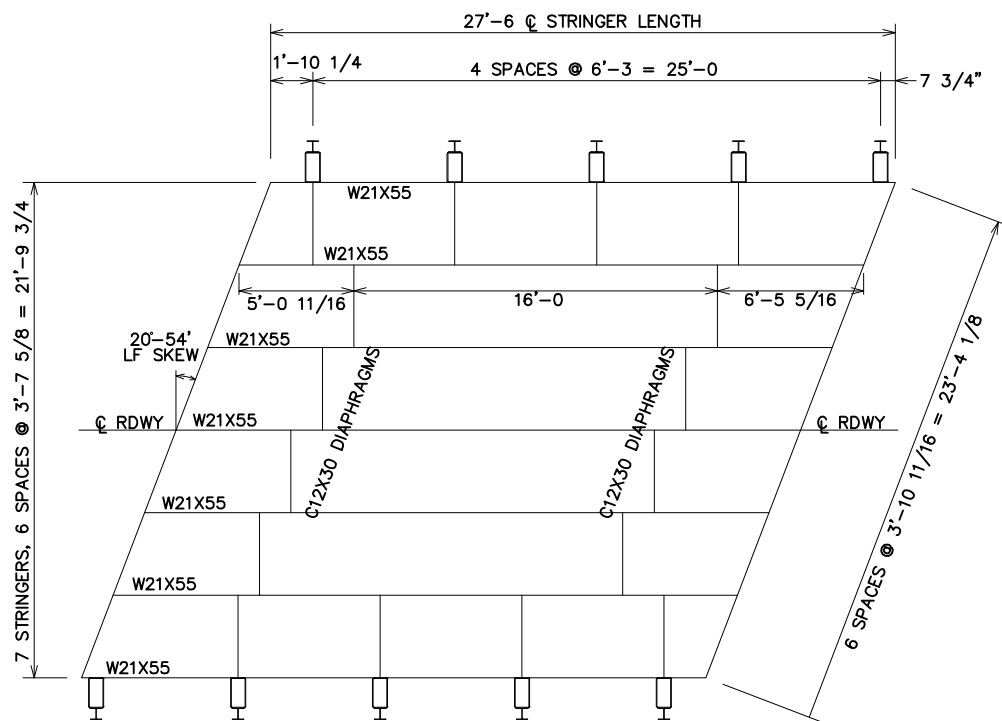


ROADWAY SECTION VIEW

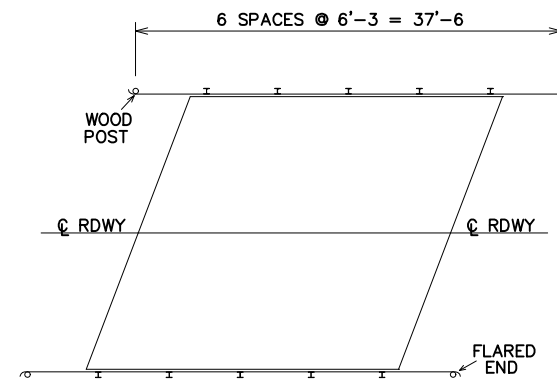


ABUTMENT DETAIL

DIMENSIONS PARALLEL WITH ϕ RDWY



FRAMING PLAN



GUARDRAIL LAYOUT

- DESIGN SPECIFICATIONS**
 AASHTO LRFD BRIDGE DESIGN SPECIFICATIONS, 7th EDITION, 2014, WITH ALL INTERIM SPECIFICATIONS IN EFFECT.
- LIVE LOAD**
 AASHTO HL93
- MATERIAL**
 ALL SUPERSTRUCTURE STEEL SHALL BE ASTM A709, GRADE 50 (A572). ALL STEEL GALVANIZED AFTER FABRICATION.
- ALL FASTENERS UNLESS NOTED OTHERWISE, SHALL BE 7/8" ϕ HIGH STRENGTH BOLTS, ASTM A325 TYPE 1 (GALV) WITH ASTM A563 GRADE C NUT AND ONE ASTM F436 WASHER PER BOLT. FASTENERS SHALL BE FURNISHED WITH ROTATIONAL CAPACITY TESTS.
- CONSTRUCTION/FABRICATION**
 AASHTO LRFD BRIDGE CONSTRUCTION SPECIFICATIONS, 3rd EDITION (2010), WITH ALL INTERIM SPECIFICATIONS IN EFFECT.
- WELDING**
 ALL WELDING SHALL BE IN ACCORDANCE WITH AASHTO/AWS D1.5 BRIDGE WELDING CODE AND THE AASHTO FRACTURE CONTROL, WHERE APPLICABLE.
- NON-DESTRUCTIVE TESTING OF WELDS SHALL BE PERFORMED AS FOLLOWS:
 FILLET WELDS - VISUAL - 100%
 - MT. - 10% MIN

NOTE: DRAWINGS RELATIVE DO NOT SCALE

CURRENT REVISION -		CURRENT SUBMITTAL -	
FABRICATOR U.S. BRIDGE		PROPOSED BEAM BRIDGE	
PISGAH ROAD URBANA TWP. CHAMPAIGN COUNTY, OHIO			SHEET NO. 1
DESIGN: SAF	DRAW: SAF	REVIEW:	CHECK: JOB#
TOTAL			1