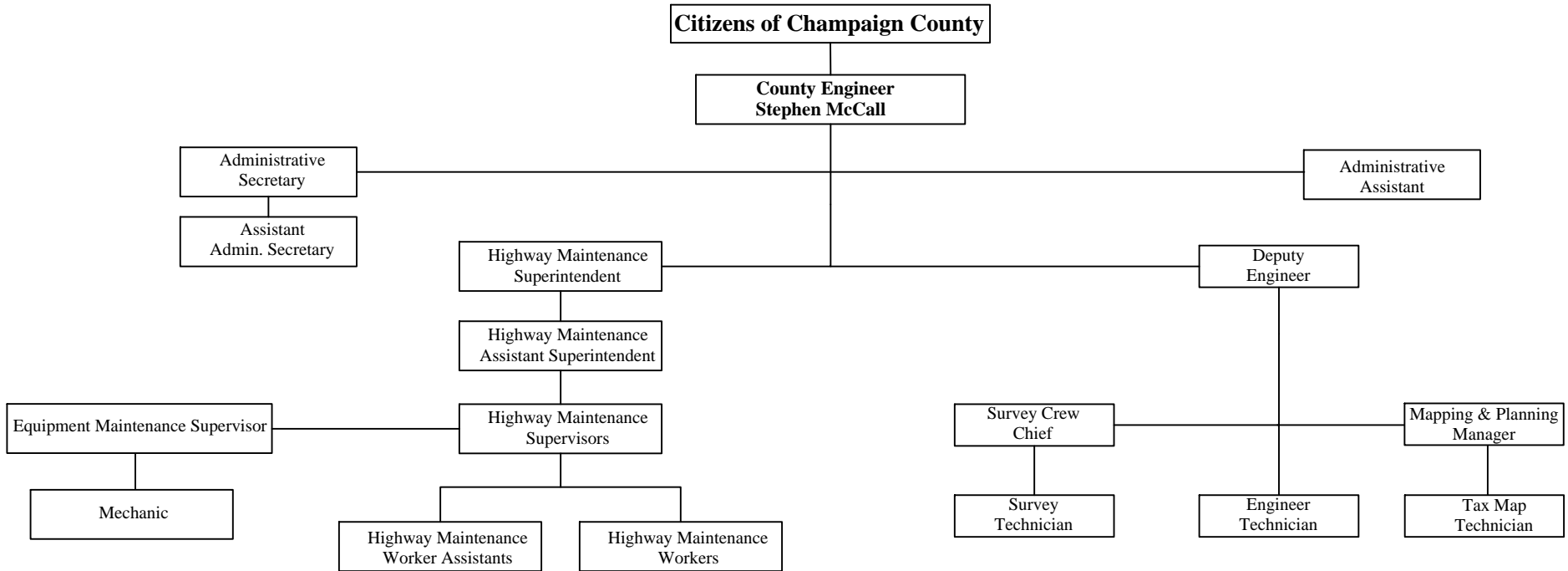


Champaign County Engineer Organizational Table



| Name | Title | Name | Title | Name | Title |
|----------------|-------------------------------|------------------|----------------------------------|-----------------|----------------------------|
| Jami Hackworth | Administrative Secretary | James Landenburg | Survey Technician | Darren McIntosh | Highway Maint. Worker |
| Vacant | Assistant Admin. Secretary | Alyssa Dunham | Tax Map Technician | Bob Thomas | Highway Maint. Worker |
| Mark Mowrey | Deputy Engineer | Nancy Rucker | Tax Map Technician | Mark Watkins | Highway Maint. Worker |
| Ted Black | Highway Maint. Superintendent | Lawrence Nott | Equipment Maintenance Supervisor | Jim Yoder | Highway Maint. Worker |
| Mike Knotts | Assistant Superintendent | Beau Graham | Mechanic | Chad Wallace | Highway Maint. Worker |
| Danny Boggs | Highway Maint. Supervisor | Todd Anderson | Highway Maint. Worker | Fred Lockery | Hwy. Maint. Wrk. Assistant |
| Steve Kite | Highway Maint. Supervisor | Bill Black | Highway Maint. Worker | Tony Todd | Hwy. Maint. Wrk. Assistant |
| Bob Harmison | Survey Crew Chief | Joey Boggs | Highway Maint. Worker | Clint Long | Hwy. Maint. Wrk. Assistant |
| Vacant | Engineer Technician | John Crowder | Highway Maint. Worker | Josh Short | Hwy. Maint. Wrk. Assistant |
| Mark Mowrey | Mapping and Planning Manager | Brad Harrison | Highway Maint. Worker | Jerry Winget | Hwy. Maint. Wrk. Assistant |
| Vacant | Administrative Assistant | Brett Herron | Highway Maint. Worker | | |